

Assembled with capillary lines series MA.95

Capillary lines Accessories for chemical seals

General features

- Accessories for chemical seals
- Solution for high temperature
- Solution for long distance measurement
- Protection from aggressive environment

Application area

Capillary lines at chemical seals are applied to separate the pressure measuring instrument from the measuring point in case of high medium temperatures or to install it at a suitable place in case of unfavourable installation conditions at the measuring point.

General specification

Material

Capillary line	St. steel 316L (1.4404)
Connection adaptor	St. steel 316LTi (1.4571)

Instrument connection

8mm (0.31") welding connection
PF 3/8" female thread with fitting

Process connection

Welded

Production pressure range

- Flush diaphragm

Diaphragm diameter	18 DIA
Connection	PF 1/2"
Pressure range	0...250 bar 0...300 bar 0...350 bar 0...500 bar
Max. lead length	3 m

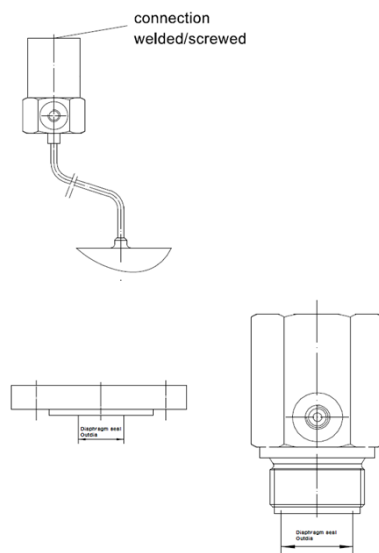
System filling

Glycerine fill fluid
Silicon fill fluid
High temperature oil
Food & beverage oil



Mechanical accessories, series MA.95

Constructure Model



Special Version

Other instrument connection
Screwed to chemical seal and /or measuring instrument
Spiral protection hose with PE cover

Option

Wall bracket, DIN 16281, model H
Wall bracket, DIN 16281, model A

DAHO

Daho Tronic Ltd.

STX W-Tower 209
Gyeongin-ro 53 Gil 90 Guro-gu
Seoul 08215 Korea

Tel: +82 2 865-7001 Fax: +82 2 865-7109
info@daho.co.kr
www.daho.co.kr