

Capsule Pressure Gauge for Low Pressure Measurement series MLC

Wetted parts are made of stainless steel
Dry or silicon filled

General specification

- All st. steel pressure gauges
- Pressure ranges from 0...16 mbar to 0...600 mbar
- Case and element assembly of stainless steel
- Bayonet bezel ring with stainless steel 304
- German movement and sensing element
- Degree of Protection, IP65

Application area

- MLC is suitable for use in various sectors of industry
- High quality stainless steel design for measuring gaseous, liquid and aggressive media.
- Chemical and petrochemical industry
- Pharmaceutical, food and beverage industry



General specification

Normal Size & pressure ranges

MLC.5xx : 100mm

Pressure ranges

From 0...16 mbar to 0...600 mbar

Accuracy class

- Scale range ≥ 40 mbar, class 1.6 (DIN EN 837-3)
- $\pm 2\%$ / $\pm 1\%$ / $\pm 2\%$ of measuring span (ASME B40.100)

Type of mounting

Bottom connection
Bottom connection with back flange
Back connection
Back connection with front flange

Pressure limitation

Steady: $3/4 \times$ full scale value
Fluctuating: $2/3 \times$ full scale value
Short time: full scale value

Zero point Adjustment

On top: open blow-out top for zero adjustment screw.

Temperature error

On deviation from the reference conditions
at the measuring system:
 $\leq \pm 0.6\%$ per 10°C of full scale value

Reference conditions

Ambient temperature: $+25^\circ\text{C}$

Overpressure safety

Scale range $\geq 0...40$ mbar, $10 \times$ full scale value

series MLC with capsule for low pressure

Temperature range of

Medium:
unfilled instruments: $-20...+100^\circ\text{C}$
Ambient :
unfilled instruments: $-20...+60^\circ\text{C}$
with silicon filling: $-40...+60^\circ\text{C}$

Case and bezel ring

Made of stainless steel, SUS 304
Bayonet ring
With blow-out top

Bourdon tube material

Stainless steel, SUS 316L

Tube form

Capsule

Movement

Stainless steel

Dial

Aluminium, white

Pointer

Aluminium, black

Window

Instrument safety glass

Degree of protection

DIN EN 60 529/IEC 529, IP 65



DAHO Tronic Limited

Tel: 02-865-7001 Fax: 02-865-7109
mail: info@daho.co.kr

STX W-Tower 209

Gyeongin-ro 53 Gil 90 Guro-gu
Seoul 08215 Korea

www.daho.co.kr

Ordering information

MODEL CODE **MLC** **option**

Dial size	
5	100 mm

Type of mounting	
1	Bottom connection
2	Bottom connection with back flange
3	Back connection
4	Back connection with front flange

Liquid filling	
0	Dry
2	Silicon

Process connection	
G2	G 1/2"
R2	R 1/2"

Unit of measurement	
mb	mbar
I	inH ₂ O
W	mmH ₂ O

Pressure range code, unit mbar

code	pressure	code	vacuum	code	compound
R124	0...16	R116	-16...0	R170	-16...+25
R126	0...25	R115	-25...0	R171	-25...+16
R128	0...40	R114	-40...0	R172	-16...+25
R130	0...60	R113	-60...0	R173	-25...+16
R131	0...100	R112	-100...0	R174	-20...+40
R133	0...160	R111	-160...0	R175	-40...+20
R135	0...250	R109	-250...0	R176	-40...+60
R137	0...400	R108	-400...0	R177	-60...+40
R21	0...600	R107	-600...0	R178	-60...+100
				R179	-100...+60
				R180	-100...+150
				R181	-150...+100
				R182	-150...+250
				R183	-250...+150
				R184	-200...+400
				R185	-400...+200

Option code

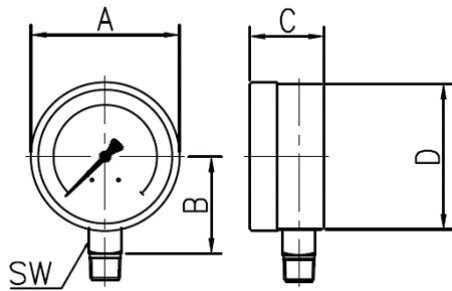
Code	Description
ND	New dial design
NF	New dial face printing cost per pcs
GM	Green marking per pcs
CD	New dial face design with company logo
UC	U-clamp for back connection, steel
NO	"USE No OIL" per pcs, at least ≥ 10 pcs
OF	Oval 3-hole front flange
TP	St. stell tag plate, 60 x 20 x 0.5t
DMCC	Manufacture calibration certificate
KC	KOLAS Ilac-MRA calibration certificate
AD	Adaptor
CC	Certificate of conformance / origin

How to order

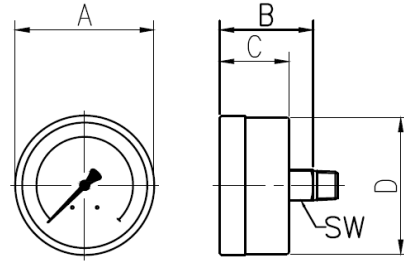
MLC.510.G2.B.R126

MLC, 100mm, Bottom connection, Dry, G1/2", 0...25 mbar

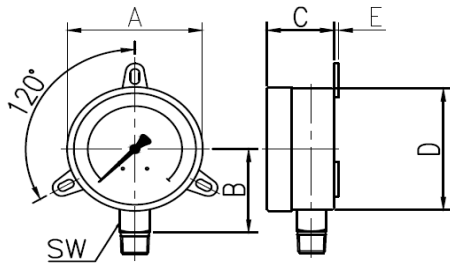
Outline drawing



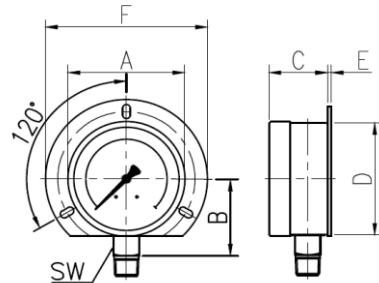
MLC.51x
Bottom connection



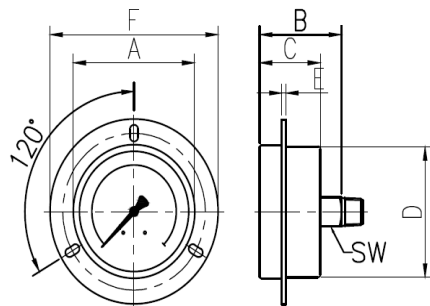
MLC.53x
Back connection / center back



MLC.52x
Bottom connection with rear flange



MLC.52x

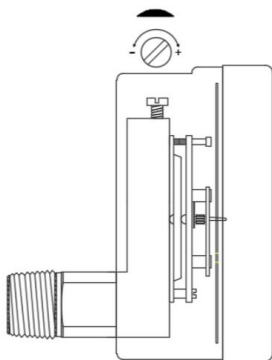


MLC.54x
Back connection with front flange

Dimension (mm)

Series MCP	A	B	C	D	E	F	SW
MLC.5xx	100	90	48	97	2	132	22

Zero point Adjustment



Open blow-out top for zero adjustment screw.

DAHO

Daho Tronic Ltd.
STX W-Tower 209
Gyeongin-ro 53Gil 90 Guro-gu
Seoul 08215 Korea
Tel: +82 2 865-7001 Fax: +82 2 865-7109
www.daho.co.kr