

Pressure gauge for anti-vibration series MAV

All st. steel materials
Apply damping movement for anti-vibration

General features

- All st. steel pressure gauges
- German movement and sensing element
- Pressure ranges from 1...0 bar to 0...1600 bar
- Accuracy class 1.0
- Case and element assembly of stainless steel
- Bayonet bezel ring with stainless steel 304
- Degree of Protection

Application area

- MAV is suitable for use in vibration sectors of industry
- High quality stainless steel design for measuring gaseous, liquid and aggressive media.
- Chemical and petrochemical industry

General specification

Normal Size & Pressure ranges

MAV.5xx : 100mm

Pressure ranges

0...1 to 0...1600 bar

Accuracy class

Accuracy (DIN EN 837-1) class 1.0

Type of mounting

Bottom connection
Bottom connection with back flange
Back connection
Back connection with front flange

Pressure limitation

Steady: 3/4 x full scale value
Fluctuating: 2/3 x full scale value
Short time: full scale value

Temperature range of

Medium:
unfilled instruments: -40...+200°C
with glycerine filling: -20...+100°C
with silicon oil filling: -40...+100°C
Ambient :
unfilled instruments: -40...+60°C
with glycerine filling: -20...+60°C

Degree of protection

DIN EN 60 529/IEC 529, IP 65



All st. steel pressure gauge for anti-vibration, MAV

Case and bezel ring

Made of stainless steel, SUS304
bayonet ring
With blow-out top

Bourdon tube

Pressure ≤ 1600 bar, st. steel, SUS 316L
Pressure < 60 bar : Bourdon tube (C-tube)
Pressure ≥ 60 bar : Herical tube (H-tube)

Movement

Stainless steel, damping movement

Dial

Aluminium, white

Pointer

Aluminium, black

Window

Instrument safety glass

Process connection

Made of stainless steel, SUS316
G1/4", G3/8", G1/2"
R1/4", R3/8", R1/2"
NPT1/2
Others on request

Option

Case filling 85%
- Glycerine
- Sillicon



DAHO Tronic Limited
Tel: 02-865-7001 Fax: 02-865-7109
mail: info@daho.co.kr

STX W-Tower 209
Gyeongin-ro 53 Gil 90 Guro-gu
Seoul 08215 Korea

Ordering information

MODEL CODE MAV • [] • [] • [] • [] • [] • [] • []

Dial size

5 : 100 mm

Option

Refer to option table

Mounting

1 : Bottom connection
 2 : Bottom connection with back flange
 3 : Back connection
 4 : Back connection with front flange

Process connection

G2 : G 1/2" / PF1/2"
 G3 : G 3/8" / PF 3/8"
 G4 : G 1/4" / PF1/4"
 R2 : R 1/2" / PT 1/2"
 R3 : R 3/8" / PT 3/8"
 R4 : R 1/4" / PT 1/4"
 N2 : NPT 1/2"
 N3 : NPT 3/8"
 N4 : NPT 1/4"
 U1 : UNF 7/16"-20 male
 U2 : UNF 7/16"-20 female
 H1 : UNF 5/8"-18 female
 H2 : M16 x 1.5 female

Liquid filling

0 : Dry
 1 : Glycerin
 2 : Silicon

Unit of measurement

B: bar
 M: MPa
 P: psi
 D: dual scale (MPa/bar)

Pressure range

MAV.5xx 0...1 to 0...4000 bar

Pressure range code, unit bar

Code	Range	Code	Range	Code	Range	Code	Range	Code	Range
R05	-1...24	R19	-1...0	R33	0...10	R42	0...70	R53	0...600
R07	-1...15	R21	0...0.6	R34	0...15	R43	0...100	R54	0...700
R09	-1...9	R23	0...1	R35	0...16	R44	0...150	R55	0...1000
R11	-1...5	R26	0...1.6	R36	0...20	R45	0...160	R56	0...1600
R13	-1...3	R27	0...2	R37	0...25	R47	0...250	R57	0...2000
R14	-1...2	R28	0...2.5	R38	0...35	R49	0...350	R58	0...2500
R15	-1...1.5	R29	0...3	R39	0...40	R50	0...400	R59	0...3000
R16	-1...1	R30	0...4	R40	0...50	R51	0...450	R60	0...4000
R17	-1...0.6	R32	0...6	R41	0...60	R52	0...500	RYY	others

Option code

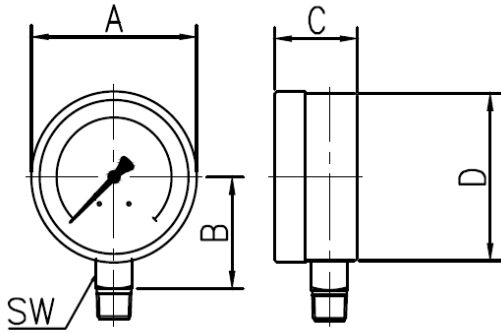
Code	Description	Code	Description
ND	New dial design	TP	St. stell tag plate, 60 x 20 x 0.5t
NF	New dial face printing cost per pcs	MC	Manufacture calibration certificate
GM	Green marking per pcs	KC	KOLAS Ilac-MRA calibration certificate
CD	New dial face design with company logo	RE	Reed switch
RS	Restrictor screw in socket hole for high pulsation	SN	Snubber
UC	U-calmp for back connection, steel	AD	Adaptor
NO	"USE No OIL" per pcs, at least ≥ 10 pcs	CC	Certificate of conformance / orign
OF	Oval 3-hole front flange	PM	2" Pipe mounting bracket
MP	Maximum pointer	NC	Ni-Cr Plate
BB	Bayonet bezel ring	AL	Aluminium pointer for MAX3

How to order

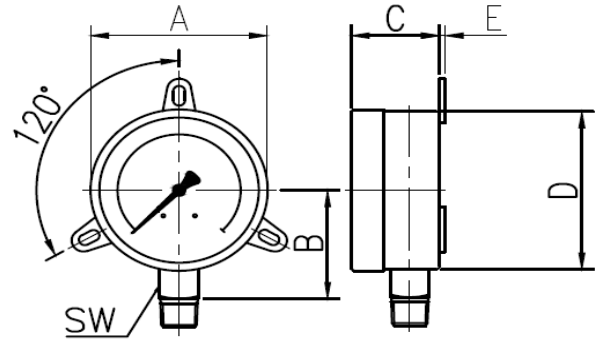
MAV.510.BR37G2.GM

MAV5, 100mm, Bottom connection, Dry, 0...25 bar, G1/2", Green marking

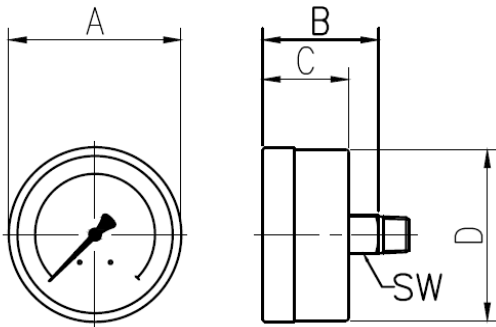
Outline drawing



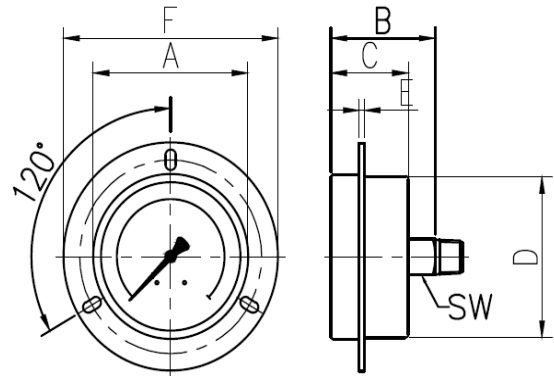
Bottom Connection



Bottom Connection with Rear Flange



Back Connection



Back Connection with Front Flange

Dimension (mm)

Series MAV	A	B	C	D	E	F	SW
Series MAV	100	90	48	97	2	132	22