

**All st. steel pressure gauges
with special damping movement
for anti-vibration
series MAV**

*All stainless steel pressure gauges
Apply damping movement for anti-vibration
German key spare parts applied*

General features

- All st. steel pressure gauges
- German movement and sensing element
- Pressure ranges from 1...0 bar to 0...1600 bar
- Accuracy class 1.0
- Case and element assembly of stainless steel
- Bayonet bezel ring with stainless steel 304
- Degree of Protection

Application area

- MAV is suitable for use in vibration sectors of industry
- High quality stainless steel design for measuring gaseous, liquid and aggressive media.
- Chemical and petrochemical industry

General specification

Normal Size & Pressure ranges

MAV.5xx : 100mm

Pressure ranges

0...1 to 0...1600 bar

Accuracy class

Accuracy (DIN EN 837-1) class 1.0

Type of mounting

Bottom connection
Bottom connection with back flange
Back connection
Back connection with front flange

Pressure limitation

Steady: 3/4 x full scale value
Fluctuating: 2/3 x full scale value
Short time: full scale value

Temperature range of

Medium:
unfilled instruments: -40...+200°C
with glycerine filling: -20...+100°C
with silicon oil filling: -40...+100°C
Ambient :
unfilled instruments: -40...+60°C
with glycerine filling: -20...+60°C

Degree of protection

DIN EN 60 529/IEC 529, IP 65



Anti-vibration pressure gauges, MAV

Case and bezel ring

Made of stainless steel, SUS304
bayonet ring
With blow-out top

Bourdon tube

Pressure ≤ 1600 bar, st. steel, SUS 316L
Pressure < 60 bar : Bourdon tube (C-tube)
Pressure ≥ 60 bar : Herical tube (H-tube)

Movement

Stainless steel, damping movement

Dial

Aluminium, white

Pointer

Aluminium, black

Window

Instrument safety glass

Process connection

Made of stainless steel, SUS316
G1/4", G3/8", G1/2"
R1/4", R3/8", R1/2"
NPT1/2
Others on request

Option

Case filling 85%
- Glycerine
- Sillicon



DAHO Tronic Limited

Tel: 02-865-7001 Fax: 02-865-7109
mail: info@daho.co.kr

STX W-Tower 209
Gyeongin-ro 53 Gil 90 Guro-gu
Seoul 08215 Korea

Ordering information

Model code

MAV

Dial size

5 100 mm

Mounting

1	Bottom connection
2	Bottom connection with back flange
3	Back connection
4	Back connection with front flange

Liquid filling

0	Dry
1	Glycerin
2	Silicon

Unit of measurement

B	bar
M	MPa
P	psi
D	dual scale (MPa/bar)

Pressure range code, unit bar

Code	Range
R05	-1...24
R07	-1...15
R09	-1...9
R11	-1...5
R13	-1...3
R14	-1...2
R15	-1...1.5
R16	-1...1
R17	-1...0.6
R19	-1...0
R21	0...0.6
R23	0...1
R26	0...1.6
R28	0...2.4
R30	0...4
R32	0...6
R33	0...10
R35	0...16
R37	0...25
R39	0...40
R41	0...60
R43	0...100
R45	0...160
R47	0...250
R50	0...400
R53	0...600
R55	0...1000
R56	0...1600

Options

refer to option table below

Process connection

G2	G 1/2" / PF1/2"
G3	G 3/8" / PF 3/8"
G4	G 1/4" / PF1/4"
R2	R 1/2" / PT 1/2"
R3	R 3/8" / PT 3/8"
R4	R 1/4" / PT 1/4"
N2	NPT 1/2"
N3	NPT 3/8"
N4	NPT 1/4"
U1	UNF 7/16"-20 male
U2	UNF 7/16"-20 female
H1	UNF 5/8"-18 female
H2	M16 x 1.5 female

Option table

Code	Description
ND	New dial design
NF	New dial face printing cost per pcs
GM	Green marking per pcs
CD	New dial face design with company logo
RS	Restrictor screw in socket hole for high pulsation
UC	U-clamp for back connection, steel
NO	"USE No OIL" per pcs, at least ≥ 10 pcs
OF	Oval 3-hole front flange
MP	Maximum pointer
BB	Bayonet bezel ring
TP	St. stell tag plate, 60 x 20 x 0.5t
MC	Manufacture calibration certificate
KC	KOLAS Ilac-MRA calibration certificate
RE	Reed switch
SN	Snubber
AD	Adaptor
CC	Certificate of conformance / orign
PM	2" Pipe mounting bracket
NC	Ni-Cr Plate
AL	Aluminium pointer for MAX3

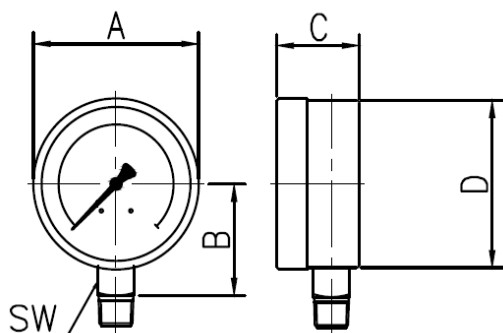
How to order

MAV.510.BR37G2.GM

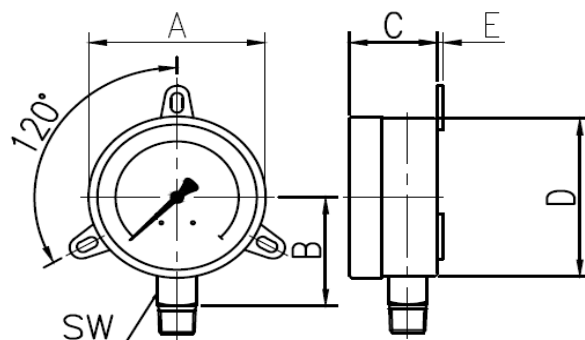
MAV5, 100mm, Bottom connection, Dry, 0...25 bar, G1/2", Green marking



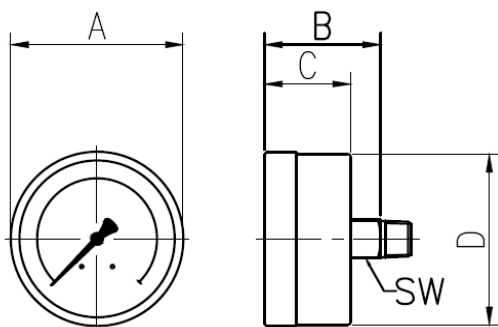
Outline drawing



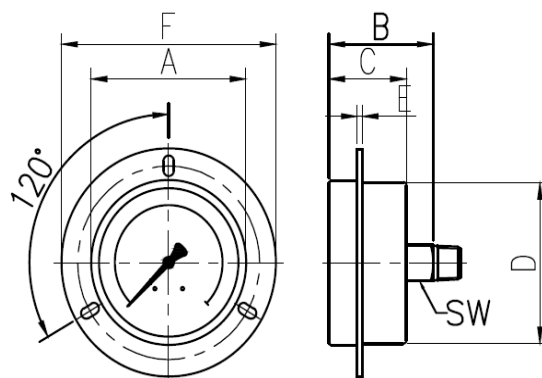
Bottom Connection



Bottom Connection with Rear Flange



Back Connection



Back Connection with Front Flange

Dimension (mm)

Series MAV	A	B	C	D	E	F	SW
Series MAV	100	90	48	97	2	132	22