

Pressure Gauge for precision MAX8_TEST

High precision Test Gauge
All st. steel materials

DAHO datasheet series MAX8_TEST

General features

- High precision pressure measurement
- All st. steel pressure gauges
- German movement and sensing element
- Scale range up to 2,500 bar
- Accuracy class 0.6
- Degree of Protection IP 65

Application area

- MAX8_TEST is suitable for use in laboratory
- High quality stainless steel design for measuring gaseous, liquid and aggressive media.
- Machinery construction, Chemical industry, Power generation and Test laboratory

General specification

Size

160 mm

Pressure ranges

-1...0 to 0...2,500 bar

Accuracy class

Class 0.6 according to EN 837-1

Pressure Limitation

Over pressure : 1.3 x Full scale value

Temperature

operating temperature ranges
(ambient and measured medium)

-20...+60°C

storage temperature

-20...+60°C

Degree of protection (DIN EN 60 529/IEC 529)

IP 65

Case and bezel ring

Material: St. steel

bayonet ring

with blow-out disc back and top

Type of mounting

Bottom Connection

Bottom Connection with back flange

Back Connection

Back Connection with front flange



Bourdon tube High precision Test Gauge, MAX8_TEST

Wetted part

Element : St. Steel

Connection : St. Steel

Process Connection

Material:St. steel

G1/2, PT1/2

Bourdon Tube

< 40 bar : C- type Bouron tube

≥ 40 bar : Herical type tube

Movement

St. steel

Dial

Aluminium, white

Pointer

Aluminium, black

Window

Instrument safety glass

Option

case filling 85%

- glycerine

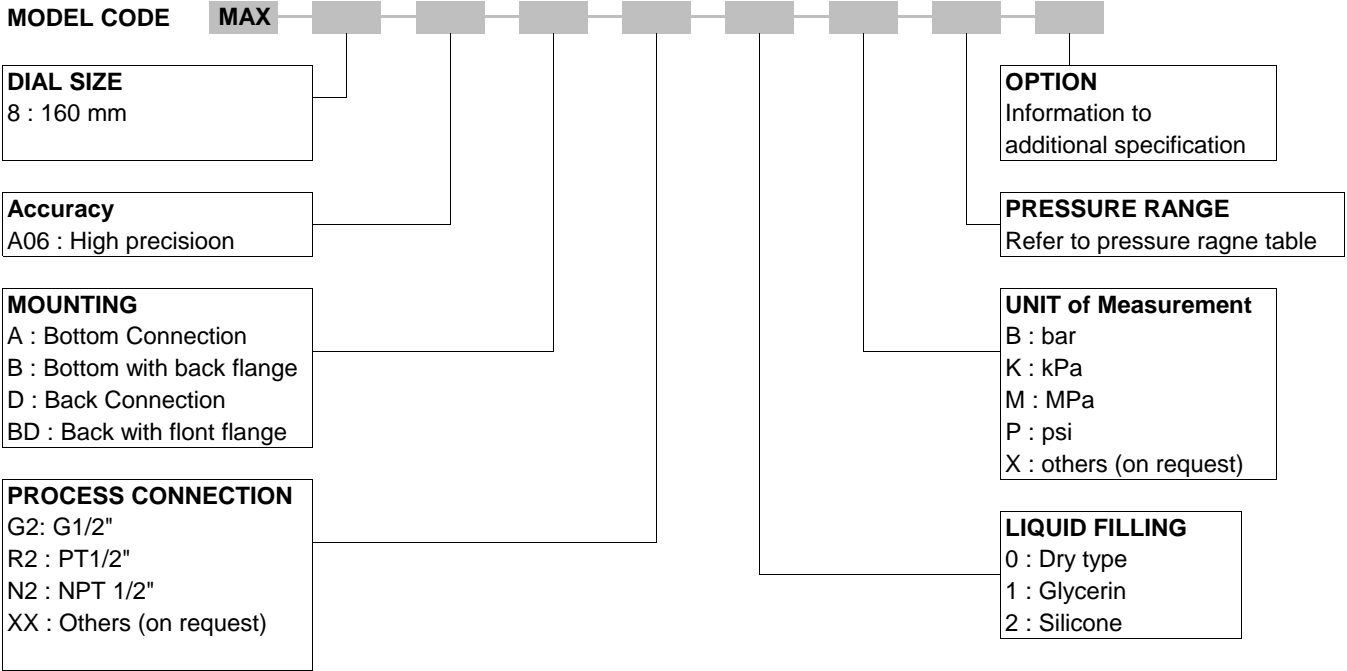
- silicone

DAHO datasheet series MAX8_TEST

Page 1 of 3

DAHO

Ordering Information



Pressure Range Code per DIN Standard range

Code	Range	Code	Range	Code	Range	Code	Range
R21	-1...0 bar	R27	0...0.4 bar	R38	0...16 bar	R52	0...600 bar
R20	-1...0.6 bar	R28	0...0.6 bar	R40	0...25 bar	R54	0...1000 bar
R11	-1...1.5 bar	R29	0...1 bar	R42	0...40 bar	R55	0...1600 bar
R10	-1...3 bar	R30	0...1.6 bar	R44	0...60 bar	R56	0...2500 bar
R09	-1...5 bar	R32	0...2.5 bar	R45	0...100 bar		
R08	-1...9 bar	R34	0...4 bar	R46	0...160 bar		
R06	-1...15 bar	R36	0...6 bar	R48	0...250 bar		
R04	-1...24 bar	R37	0...10 bar	R50	0...400 bar	YY	Others

How to Order

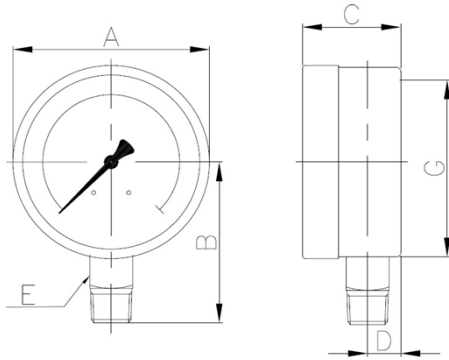
MAX8-A06-A-G2-0-B-R40

MAX8_TEST, 160mm, Cl. 0.6% of FS, Bottom Connection, G1/2", Dry type, 0...25 bar

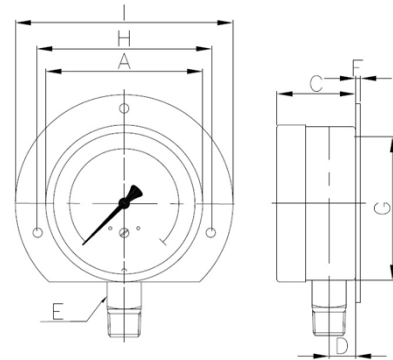


Outline Drawing

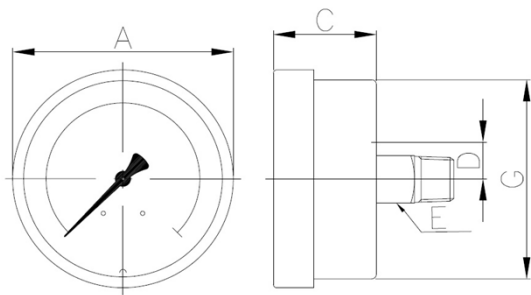
A : Bottom Connection



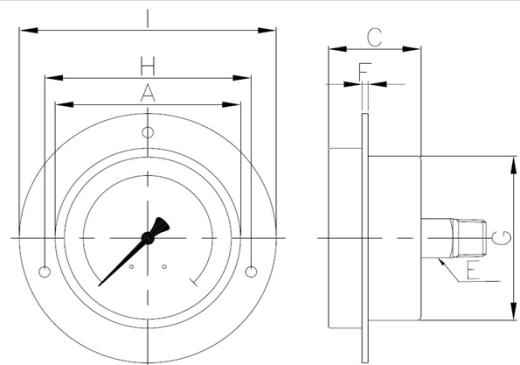
B : Bottom Conn't with Back Flange



D : Back Connection



BD : Back Conn't with Front Flange



Dimension (mm)

MAX8_TEST	A	B	C	D	E	F	G	H	I
MAX8-A06	160	116	50	16	22	4	159	178	196
Armano-RFCh	161	115	51	-	-	6	-	178	196
WIKA-332.50	161	118	49.5	15.5	22	-	159	-	-
Labom-BA6000	160	113	55.5	19	22	11	-	178	196